

---

# Malmet (Australia) Pty Ltd



Head Office & Customer Service  
9-11 McKay Avenue PO Box 373  
LEETON NSW 2705 LEETON NSW 2705  
Phone: +61 2 6953 7677  
Email: info@malmet.com.au

ABN 95 001 717 791

---

## ***Fluid Warming Cabinet***

***For Models:***

***FWM; FWS; FWFB; FWFC; FWTFB; FWTFC  
FFWF; FBWF; FSWF; FFWFC; FBWFC; FSWFC***



## ***Operation, Maintenance and Installation Manual***

Serial Number:.....	Supplied to: .....
Date Installed:.....	Installed by: .....

***Note: Due to Malmet's Policy of continuous product improvement;  
design and technical specifications are subject to change without not***



## **Table of Contents**

Foreward	2
Quality Policy	
Certifications	
Safety Instructions	3
Deign Parameters	4
Section A - Unit Operation	5
• Before starting the Unit	
• Starting the Unit	
• Changing the Set Temperature (lock out feature)	
• Temperature Sensor Plate	
• Temperature Cut Out	6
Section B – Unit Maintenance	7
• Preventative Maintenance	
• Trouble Shooting Guide	
• Wiring Diagram	8
Section C – Unit Installation	9
• Floor Bench Skirt	
• Combination Cabinets	
• Cabinet Stand	
• Combination Conversion Kit	
• Wall Mounted	10
• Cabinets with Castors	
<b>Unit Specifications</b>	<b>11</b>
Malmet Warranty Statement	12



---

## ***Operation, Maintenance and Installation Manual***

---

### **Foreword**

To obtain maximum life and efficiency from your Malmet Warming Cabinet and to ensure safe operation, please read this manual thoroughly and follow all instructions before operating the machine.

This manual provides information on the operation of the machine. It is recommended that all persons operating the equipment have access to this manual for training purposes.

### **Quality Policy**

Malmet (Australia) Pty Ltd is Quality Certified to ISO 9001, ISO 13485, AS 3902, NZS 9002 and guarantees the quality of this product. Should you have any problems with your machine, contact the company from whom you purchased it, or Malmet (Australia) Pty Ltd.

### **Certifications**

ARTG Registration Number 188762 Class 1

Electrical Safety: Certificate of Suitability ASA 12050102

## **Malmet (Australia) Pty Ltd**

Head Office and Customer Service

9-11 McKay Ave

PO Box 373

LEETON NSW 2705

Telephone: +61 2 6953 7677

E-mail: [info@malmet.com.au](mailto:info@malmet.com.au)

Web Site: [www.malmet.com.au](http://www.malmet.com.au)



## **SAFETY INSTRUCTIONS**

### **WARNINGS**



**Be aware of 240 Voltage.**



**Disconnect power when servicing.**



**Mains power GPO must be in an accessible position so device can be isolated from mains power during service.**



**If the supply cord is damaged it must be replaced by a special cord or assembly from the manufacturer or its service agent.**



**Do not overload shelves.**



**Do not obstruct hot air outlet above top shelf.**



**Castors are provided for convenience but not as a means to be wheeled across thresholds or similar obstacles. Castors enable the device to be moved easily aside for cleaning the floor or making space.**



**Wall mounted units must be mounted to load bearing walls.**



**All cabinets should be located on a level floor surface and should never be operated on a sloping surface.**



**Install temperature probes and element over temperature protection thermal cut-outs correctly.**



---

## Operation, Maintenance and Installation Manual

---

### Design Parameters

Malmet Fluid Warming Cabinet models FWM; FWS; FWFB and FWFC are designed to hold 60 litres of fluid in 1 and 2 litre bottles and bags. The cabinet has 4 shelves with 3 being adjustable; 15 litres per shelf maximum load.

Malmet Fluid Warming Cabinet models FBWF; FFWF; FSWF; FBWFC and FSWFC are designed to hold 60 litres of fluid in 1 and 2 litre bottles and bags in each fluid warming section of the cabinet. The cabinet has 4 shelves with 3 being adjustable; 15 litres per shelf maximum load.

Malmet Fluid Warming Cabinet models FWTFB and FWTFC are designed to hold 91 litres of fluid in 1 and 2 litre bottles and bags. The cabinet has 7 shelves with 6 being adjustable; 13 litres per shelf maximum load.



**Do not overload shelves. Heated air must be allowed to circulate around the fluid containers.**

The temperature can be adjusted up to a maximum of 37°C and **has a lock out feature, which allows only authorised staff to change the temperature.**

A fluid temperature sensor plate is located in the cabinet, which enables actual fluid temperature to be monitored.

All Malmet Fluid Warming Cabinets are designed to be left on permanently.

**Electrical Rating**            240V 50Hz 2.8 Amps supplied with IEC power cord standard 10 Amp plug.

**Wall Mounted**                Place into position and bolt to the wall using the bracket supplied and then plug the unit into a standard 240V outlet.



**This appliance is not intended for use by young children or infirmed persons.**



## Section A – Unit Operation

### NOTE

The Fluid Warming Cabinet is factory set to 37°C.  
We recommend you check with your fluid supplier for the correct temperature.

### **Before Starting the Unit**

The unit should be run initially on a power supply not protected by an earth leakage circuit breaker for approximately three hours. This will allow any moisture in the heater to dry out. The unit can then be connected to an earth leakage circuit breaker protected circuit if required.

Plug into standard 240V outlet.

### **Starting the Unit**

Press the standby button, the preset temperature of the cabinet appears for approximately five seconds. After five seconds the unit switches to display the actual cabinet temperature.



### **Changing the set temperature (lock out feature) AUTHORISED PERSONNEL ONLY**

Authorised operators can change the temperature by holding the up and down temperature buttons at the same time for a total of 5 seconds. The temperature can then be adjusted. The setting will revert back to tamper proof 5 seconds after the temperature is adjusted or if the up and down temperature buttons are not pressed within 5 seconds.

### **Temperature Sensor Plate**

When new product is introduced into the cabinet the temperature of the fluid can be monitored using the temperature sensor plate.

1. Place fluid container on the Fluid Sensor Plate located on the bottom shelf ensuring the sensor disc is completely covered.
2. Wait two minutes for an accurate temperature reading to be obtained.
3. To view actual fluid temperature, via the main display board, press and hold down either of the up or down temperature buttons.

**Note 1:** It can take an average of eight hours for a full load of fluid containers to reach required temperature. This time may vary depending on the configuration of the load. We recommend that the cabinet is re-stocked at the end of each day.

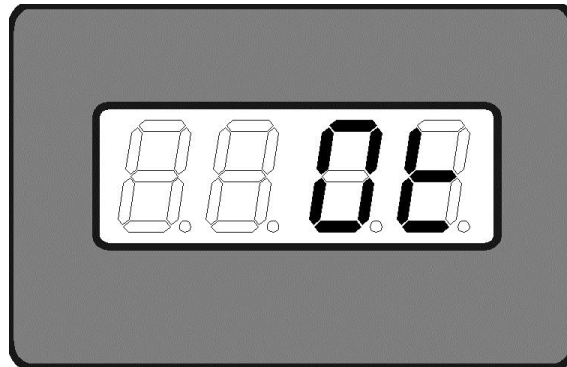
**Note 2:** Rotation of Stock is important, as once warmed, solution should be used within 14 days.

**Operation, Maintenance and Installation Manual**

**Temperature Cut Out**

The unit has a built in electronic over temperature cut out which will switch off the elements if the selected temperature is exceeded by 5°C, and 'Ot' will flash on the display panel. (See Fig 1)

If the electronic cut out fails, a secondary safety bi-metallic cut out temperature switch will switch off the power to the elements.



**Fig 1**



## Section B – Unit Maintenance

### Preventative Maintenance

Daily	Wipe out inside doors and chamber with warm water and detergent.
Weekly	Wipe over outside panels with stainless steel cleaner.
Annually	To be performed by Malmét Technician or other authorised personnel. <ol style="list-style-type: none"> <li>1. Check electrical connections as per AS/NZS 3551:2012</li> <li>2. Perform temperature calibration             <ul style="list-style-type: none"> <li>• Insert calibrated thermometer</li> <li>• Allow cabinet temperature to stabilise</li> <li>• Compare cabinet display temperature to thermometer value &amp; ensure discrepancy is within +/- 2 °C.</li> </ul> </li> </ol>

Units should have regular Test and Tag procedures undertaken.

### Trouble Shooting Guide

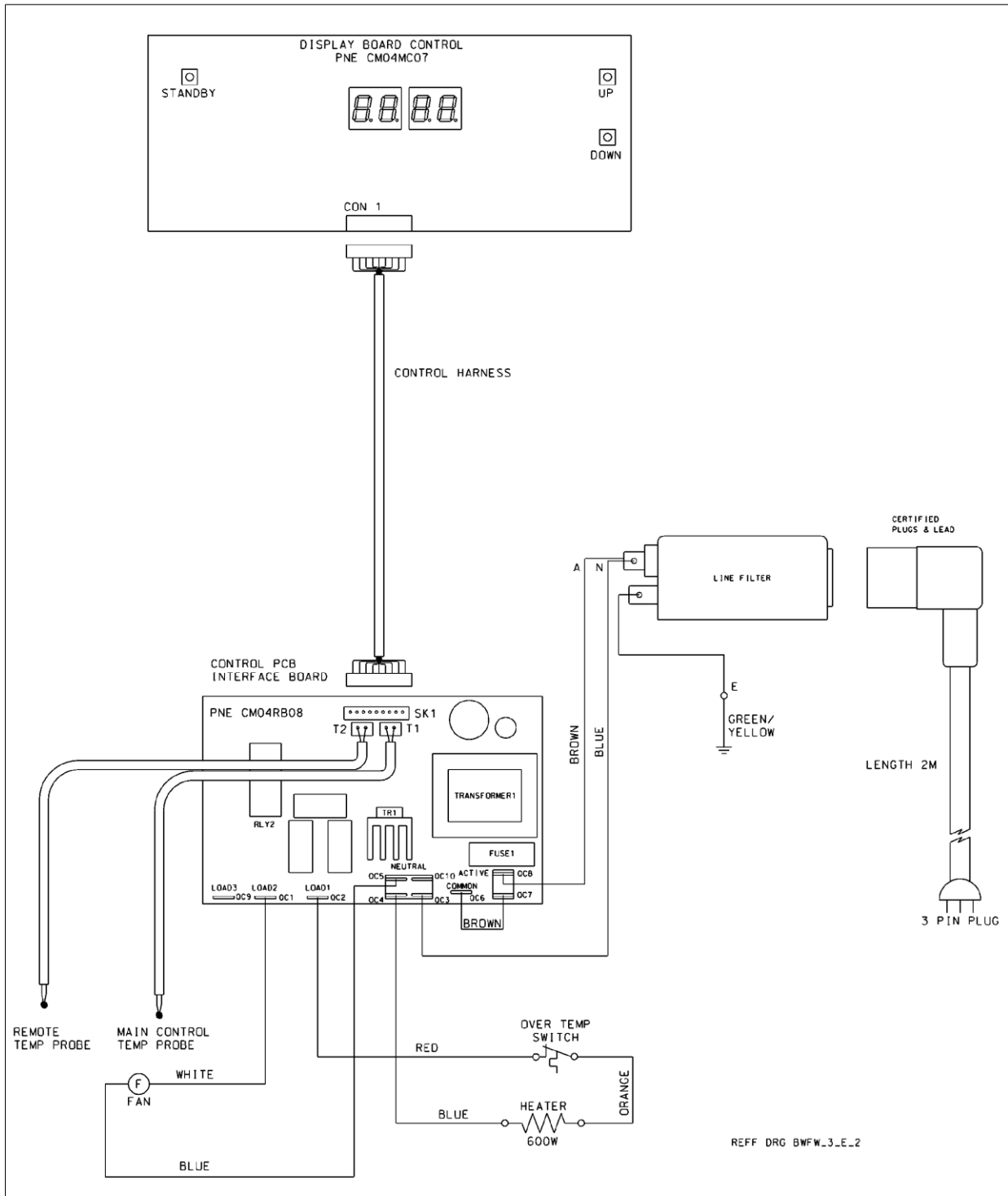
Problem	Probable Cause	Suggested Remedy
Display not on or won't turn on.	No Mains power supply. Power point not turned on. Display will not turn on. Faulty display board. Interconnecting harness failure. Relay board fault.	Check power supply and lead plugged in. Check power switched on. Press Standby button. Switch off power supply at main and Call for Service.
Display turns on. (Runs for approximately ½ - 1 hour then turns off).	Fan failure.	Switch off power supply at main and Call for Service.
Display is on but unit not heating.	Element failure. Relay board failure.	Switch off power supply at main and Call for Service.
Display indicates Ot	Fan Failure. Element on. Continuously unable to switch off. (Relay Board Failure)	Switch off power supply at main and Call for Service.
Display indicates O/C	Control Temperature Thermistor is broken or unplugged.	Switch off power supply at main and Call for Service.
Display on but unit cooling down.	Element failure. Relay board failure.	Switch off power supply at main and Call for Service.





Operation, Maintenance and Installation Manual

Wiring Diagram





## **Section C – Unit Installation**

### **Floor Bench Skirt**

Floor Bench Skirt is factory fitted to the cabinet. To level, remove the four plastic plugs from the inside floor and adjust the feet by turning the slotted screw head. Once the unit is level, replace the plugs.

If the Floor-Bench Skirt is ordered separately to convert a cabinet the conversion will take approximately fifteen minutes and requires a screwdriver only. Carefully, place the cabinet on its back. The base is pre-drilled with ten nutsert holes. Using the screws supplied, fasten the Floor-Bench Skirt. Carefully, stand the unit upright and level as above.

The front panel of the Floor-Bench Skirt is removable to clean under the unit.

### **Combination Cabinets**

To level, remove the four plastic plugs from the inside floor and adjust the feet by turning the slotted screw head. Once the unit is level, replace the plugs.

The front panel of the floor skirt is removable to clean under the unit.

### **Cabinet Stand**

Cabinet Stand is factory fitted to the cabinet. To level, remove the front panel of the stand and adjust the feet by turning the slotted screw-head. This panel can also be removed to clean under the unit.

If the stand is ordered separately to convert a cabinet the conversion will take approximately fifteen minutes and requires a screwdriver only. Carefully, place the cabinet on its back. The base is pre-drilled with ten nutsert holes. Using the screws supplied, fasten the stand. Carefully, place the unit upright and level as above.

### **Combination Conversion Kit**

This comprises a Floor-Bench Skirt and a Rear Joining Bracket. Conversion will take approximately fifteen minutes and requires a screwdriver only. Carefully, place the bottom cabinet on its back. The base is pre-drilled with ten nutsert holes. Using the screws supplied, fasten the Floor-Bench Skirt. Carefully, stand the unit upright.

Remove the 7 plugs (3 small and 4 large) on the top of the bottom cabinet, place the top cabinet in position locating the bottom hinge bolts in the four large holes. Remove the two screws in the cabinet that secure the slide out service tray and slide out as far as it will go. There are three securing holes located inside the top of the service compartment. Using the screws supplied, fasten the cabinets together and replace the service tray.

The back of both cabinets are pre-drilled with four nutsert holes, using the screws supplied, fix the Rear Joining Bracket into position. Place the cabinet in position and level.



**Plugs must be replaced after levelling or the temperature control of the cabinet may be compromised.**



---

## **Operation, Maintenance and Installation Manual**

---

### **Wall Mounted Cabinet**

Wall Mounting Brackets are supplied for models FWM; FWS; FWFB; FWFC; FBWF; FFWF; FSWF; FBWFC and FSWFC. Secure the bracket to the wall ensuring it is level. We recommend 4 (8mm x 50mm) long coach screws for stud position walls and dyna bolts for solid walls.

Two people are required to lift the cabinet to the height of the Mounting Bracket, move the top of the cabinet to the wall at approximately 45° and locate on the Wall Mounting Bracket. When secure swing the bottom of the cabinet to the wall ensuring it is firmly pushed onto the wall bracket. To remove, reverse this procedure.

### **Cabinets with Castors**



All cabinets should be located on a level floor surface and should never be operated on a sloping surface.

Check that all swivel wheels are in lock position.

Should the cabinet require to be moved, disconnect power plug from the GPO.






CAUTION: WALL MOUNTED BLANKET CABINET WHEN FULLY LOADED WEIGHS APPROXIMATELY 103KG.  
UNLOADED WEIGHT APPROXIMATLY 83 KG



## Operation, Maintenance and Installation Manual

### Unit Specifications

<b>Capacity</b>	Litres of Fluids	Models: FWM; FWS; FWFB; FWFC 60 Litres
		Models: BBWF; FBWF; BSWF; BBWFC; BSWFC 60 Litres per fluid warming chamber
		Models: BWTFB; BWTFC 91 Litres
<b>Shelves</b>	4 with 3 adjustable	Models: FWM; FWS; FWFB; FWFC 15 Litres per shelf maximum load
	4 with 3 adjustable (per fluid warming chamber)	Models: BBWF; FBWF; BSWF; BBWFC; BSWFC 15 Litres per shelf maximum load
	7 with 6 adjustable	Models: BWTFB; BWTFC 13 Litres per shelf maximum load
<b>Electrical Rating</b>	Volts	240V
	Phase / Hz	1 ph / 50 Hz
	Amps	2.8 Amps
	Watts	0.6 kW
<b>Environment operating conditions</b>	Temperature                      Relative Humidity	+10°C to +25°C +30% to +70%
<b>Electrical Connection</b>	IEC right angle Power Cord with 3 Pin Plug	10 Amp (into standard GPO 240 Volt)
<b>Hot Air Fan</b>	Continuous operation	Ball bearings 230V 50 Hz
<b>Elements</b>	Circular Unfinned	Incoloy 840 sheathed 10mm diameter tubular
	Rated	240V 600 watt
<b>Control PCB</b>	Microprocessor Control Relay	PCB (SKCM325) Access via compatible RS232
	Overtemp Protection	Electronic cutout @ 5°C above set point
<b>Temperature Control</b>	Incremental 1°C – 50°C	Factory set at 37°C
<b>Secondary Overtemp Protection</b>	High Limit	Auto reset Bi-Metallic Disc 60°C
<b>Materials</b>	Doors	Bi-parting, double glazed with powder coated frames
	Cabinet	304/4 and 430D stainless steel
<b>Environment conditions Transport and Storage</b>	 Fragile  Keep away from rain  Do not stack	



If the supply cord is damaged it must be replaced by a special cord or assembly from the manufacturer or its service agent.



## Malmet (Australia) Pty Ltd

Website: [www.malmet.com.au](http://www.malmet.com.au)

### Warranty Statement – Australia Only

Subject to the following conditions, we provide, from the date of purchase, the following warranty on Malmet units and spare parts:

- Functional components found within the unit to be defective in workmanship or material will be repaired or replaced free of charge subject to the periods of warranty specified.
- A decision regarding whether the defective components will be repaired or replaced will be determined at the sole discretion of Malmet (Australia) Pty Ltd (“**Malmet**”) or its authorized agents or representatives.
- The structural warranty covers any structural components within the unit, which fail to perform their intended function due to faulty manufacture or deterioration within the warranty period.

This warranty only covers products manufactured by Malmet.

This warranty covers Australia Only.

Parts replaced in units under warranty are warranted for the balance of the original warranty period for that unit.

Malmet Units	
Unit Components	Parts & Labour
Structural Guarantee	1 Year from Date of Purchase
All other components	1 Year from Date of Purchase of unit
Malmet Spare Parts	
1 year from Date of Purchase	

This warranty is provided, and operates in addition to, the statutory warranties Malmet provides you as a consumer under the Australian Consumer Law or by virtue of any other applicable legislation.

The installer is responsible for the correct installation, start up and demonstrating the operation of the product. They are also responsible for issuing the relevant certificates of compliance (these may differ from state to state).



## Operation, Maintenance and Installation Manual

### **CONDITIONS AND EXCLUSIONS**

- Equipment must be installed according to our instructions (outlined in our Operation, Maintenance and Installation Manual) and operated to the purpose it was designed.
- To the extent permitted by law, this warranty shall not cover damage, malfunction or failure resulting from accident, misuse or misapplication, improper or unauthorised repair, neglect or modification or use of unauthorised replacement parts or accessories, inclusive of detergent, or improper voltage. The warranty shall be void if the serial number is removed or altered.
- Parts damaged in transit back to Malmet Leeton due to poor packaging could result in warranty claim being rejected.
- Any part tampered with or which has been altered by unauthorised repairs and/or modifications will be rejected under a warranty claim.
- Reasonable access must be allowed for maintenance. If any additional equipment is needed to provide access to the unit, this must be provided (and paid for) by the owner.
- It is the owner's responsibility to provide safe access to the unit. Malmet, or any of its authorised service outlets, may refuse to perform maintenance or warranty work if access is unsafe, as determined by Malmet or any of its authorized service outlets at their sole discretion (acting reasonably).
- Should a warranty claim be rejected you will be advised in writing with a full explanation of our reasons.
- Malmet have a Warranty Claim Procedure that is fair to our customers and provides an efficient system of replacement and/or repair of faulty parts. If at any time you believe we are not meeting our commitment to you please contact Malmet Head Office via email: [info@malmet.com.au](mailto:info@malmet.com.au)
- To the extent permitted by law, no responsibility will be accepted for outside elements including, but not limited to storms, pest and vermin that may cause damage to the unit.
- To the extent permitted by law, no responsibility will be accepted for damage incurred as a result of, or incidental to, electrical surges or brown outs or for any other consequential damages.
- If there is no certificate of compliance for plumbing or electrical, Malmet reserves the right to refuse service on non-compliant installations.
- To the extent permitted by law, claims for damage to contents, carpet, ceilings, foundations or any other consequential loss either direct or indirect resulting from, power spikes, incorrect operation, incorrect installation, faulty product or any other cause, are excluded.
- This warranty, and to the extent permitted by law, any warranties owed by Malmet under the Australian Consumer Law or other applicable legislation, are not transferrable and cannot be sold, assigned or transferred in any other way from the purchaser to any other person.
- To the extent permitted by law, unauthorised use of any parts that were not supplied or approved for use in the applicable unit by Malmet will result in this warranty and any warranty claims applicable to that unit being void.
- Warranty labour (service work) shall **not** include units located outside of city metropolitan areas of Melbourne, Sydney, Adelaide, Perth and Brisbane. Costs outside these areas shall be borne by the Customer. The Customer shall be notified of this prior to the warranty call out.

To the extent permitted by law, a charge will be made for work done or a service call made where:

- There is no default apparent with the unit, as determined by Malmet or its authorized representative or agent at their sole discretion (acting reasonably).
- The defective operation of the unit is due to failure of electricity or water supply.
- Defects are caused by neglect, incorrect application, abuse or by accidental damage of the unit.
- An unauthorised person has attempted to repair the unit.
- Harsh environmental situations including, but not limited to, water quality that may cause the water tank damage cannot be considered warranty.



---

## **Operation, Maintenance and Installation Manual**

---

### **HOW TO MAKE A CLAIM UNDER THIS WARRANTY**

If you believe there is a defect in a unit you have purchased from Malmet, you must notify Malmet in writing of such defect, by sending an email ("**Notice of Defect**") to info@malmet.com.au prior to the expiration of the applicable warranty period set out in this warranty.

For the avoidance of doubt, Malmet must receive your Notice of Defect prior to the expiration of the warranty period.

To the extent permitted by law, Malmet will not reimburse you for any expense you incur in claiming or attempting to make a claim for repair or replacement of a component under this warranty.

Date Commissioned: .....

Warranty Expiry Date: .....

**Sold To:**

**For Service Contact:**

### **PROOF OF PURCHASE**

Please retain your proof of purchase. Your receipt/invoice or commissioning certificate is your warranty and will be required to validate any warranty.

### **E.&O.E.**

In the interest of continued product improvement, Malmet (Australia) Pty Ltd reserves the right to alter specifications without notice.

### **AUSTRALIAN CONSUMER LAW DISCLAIMER:**

Our goods come with guarantees that cannot be excluded under the Australian Consumer Law. You are entitled to a replacement or refund for a major failure and for compensation for any other reasonably foreseeable loss or damage. You are also entitled to have the goods repaired or replaced if the goods fail to be of acceptable quality and the failure does not amount to a major failure.



Manufactured by  
**Malmet (Australia)**  
ABN 95 001 717 791

[www.malmet.com.au](http://www.malmet.com.au)